

Client and Activity

GIS Based Mapping for Landbase preparation for Indraprastha Gas Limited, India

Objective

To create a GIS based land Information System using modern techniques of Remote Sensing, Satellite Imagery and GPS based surveys for New Delhi.

Location

- Geographical Location (Centroid) : Latitudes 28035'N & Longitudes 77012'N



Deliverables

1. Study area with ground control points selected through Differential GPS to ensure accuracy of 0.5 mt. In X, Y, Z directions.
2. BASE MAPS on 1:4000 Scale based on Latest IKONOS or QUICKBIRD Satellite data (in Arc .e00, .shp, dgn or.dxf format) with Graphical layout for entire study area, containing layers for Transportation (Roads/ Railway lines, Cart tracks), vegetation, water bodies, drainage, canals, Built-up Areas etc.
3. Technical report containing the GIS based Base Maps, Thematic Maps, with complete graphical layouts (with full colors) on paper.
4. Base Maps in Arc .e00, .shp, dgn or.dxf format with single line diagram of Landbase (Georeferenced and superimposed).
5. All the digital data shall be delivered in CD ROM's / DVD ROM's and hard copy formats such as plotted outputs and printouts.

Approach

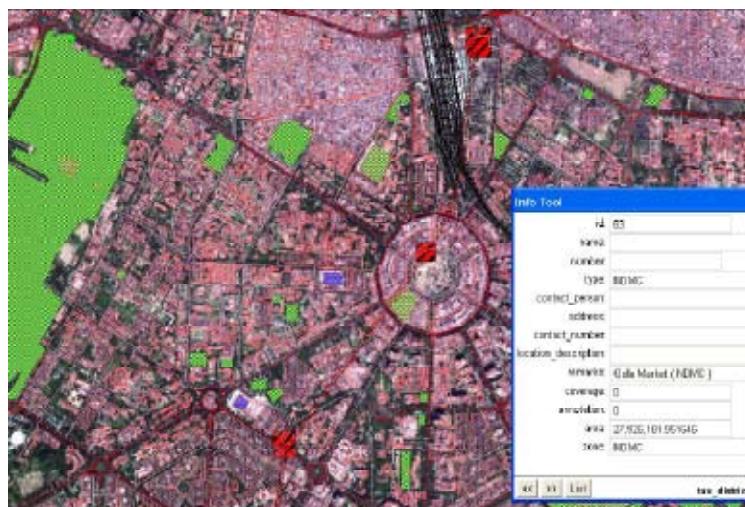
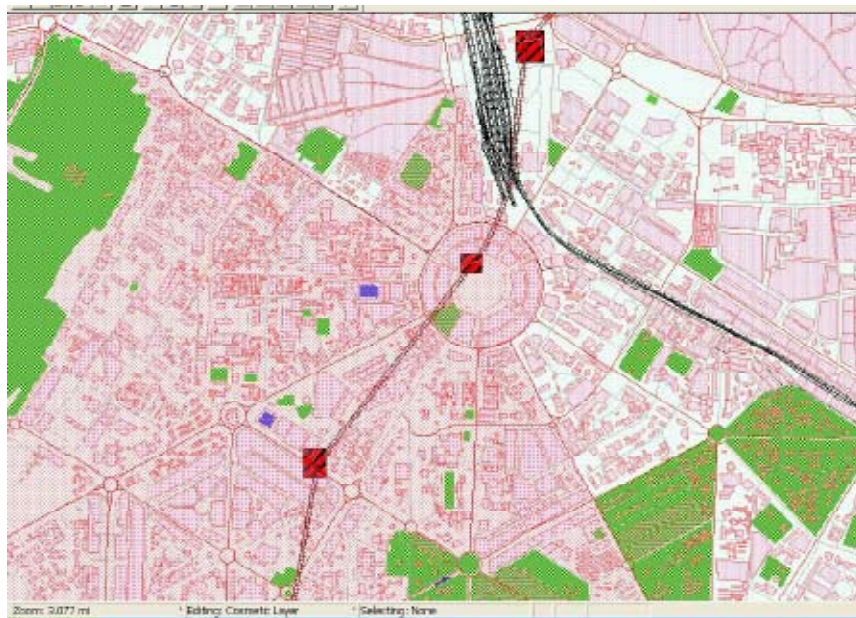
Satellite Image

Creation Of Base Map + Distribution network Maps

Integrating the consumer data with GIS data

Data Analysis

Implementing the Consumer Indexing & billing System



Methodology

- Selection & Acquisition of Spot Satellite Imageries for New Delhi (2.5 Meter Color data).
- Geocoding & Geometric Corrections of Satellite data.
- 2D Feature Extraction, Feature Codification.
- Creation of GIS layers.
- Thematics Mapping.
- Ground Survey.
- Transforming this on Large Scale Base Maps.
- GIS Based data linking.